

152 Paturi - spitalizare continua (din care 24 paturi Covid)
10 Paturi - spitalizare de zi

14 Functii conducere
187 Functii de executie

CONSILIUL JUDETEAN BRAILA
SPITALUL DE PNEUMOTIZIOLOGIE
Str. R.S. Campiului Nr. 21, Braila, 810003,
Tel: 0239 613 665; Fax: 0239 613 113
www.spitalutbcbdr.ro
epitalltcbbraila@yahoo.com

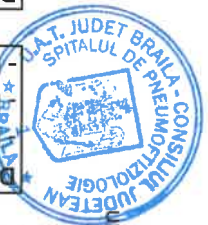
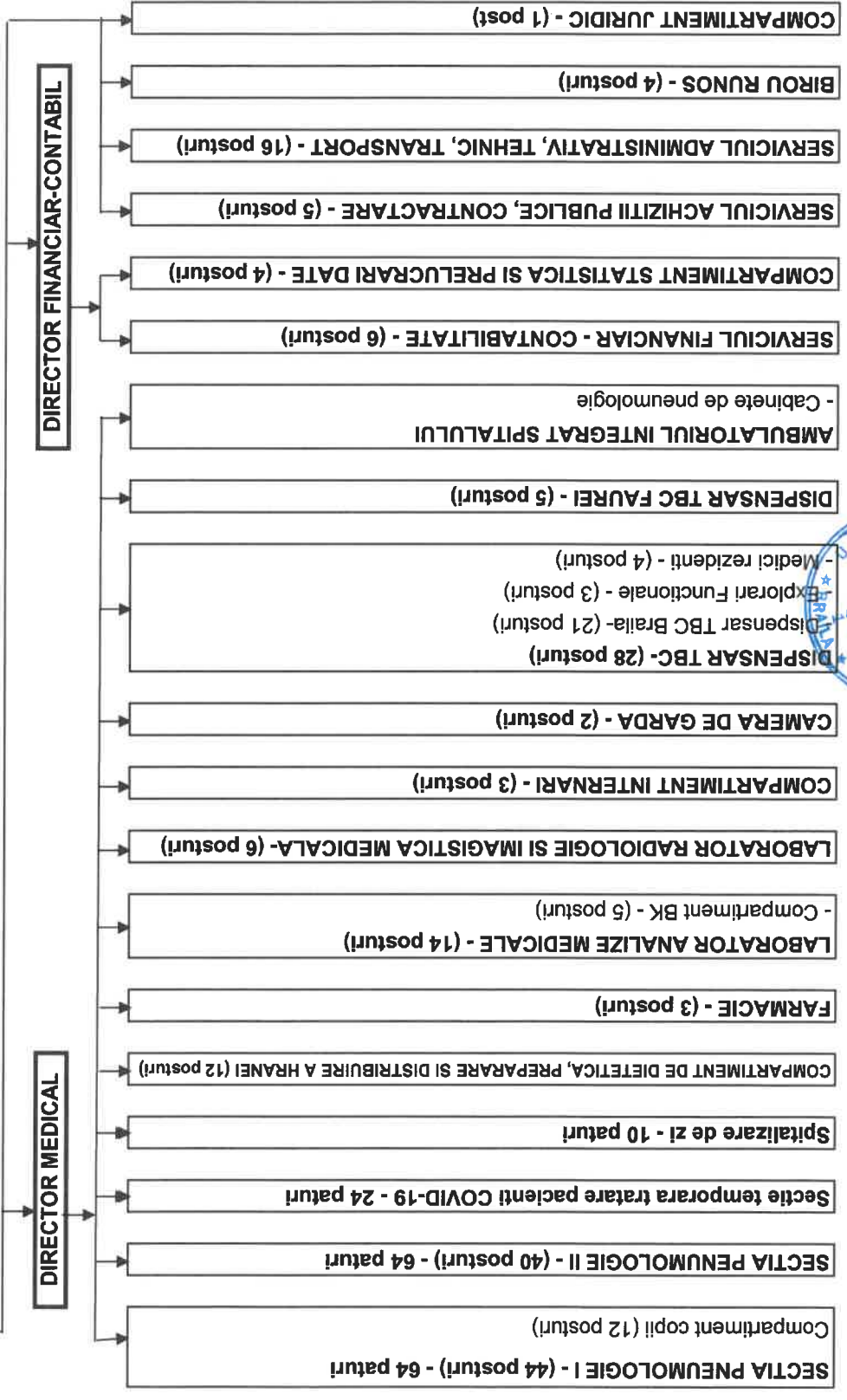
ANMCS
unitate afiata in
PROCES DE ACREDITARE
CICLUL al II-lea



MANAGER ↔ CONSILIUL DE ADMINISTRATIE

ANEXA NR. 1 SA HOY NR. 263/2024

SERVICIUL DE MANAGEMENT AL CALITATII SERVICIILOR DE SANATATE - (5 posturi)
- Compartiment CPIAAM (2 posturi)



Manager,
Ec. Siripeiru Stefan



CONSILIUL JUDETEAN BRAILA
SPITALUL DE PNEUMOFTIZIOLOGIE

Str. R.S. Campiniu Nr. 21, Braila, 810003,
 Tel: 0239 613 665; Fax: 0239 613 113
 www.spitalultbcbbr.ro
 spitaltbcbraila@yahoo.com

ANMCS
 unitate aflată în
 PROCES DE ACREDITARE
 CICLUL al II-lea



152 Paturi- Spitalizare continua
 10 Paturi- Spitalizare de zi

14 FUNCTII DE CONDUCERE
 187 FUNCTII DE EXECUTIE

STAT DE FUNCTIUNI LA 08.12.2021
DATA DE

CONDUCERE

Lege-
 Cadru
 153/2017

Nr Crt.	Denumirea functiei	Grad profesional	Studii	Grad	Post	Observatii
1	Manager		S	II	1.0	
2	Director financiar-contabil		S	II	1.0	
3	Director medical		S	II	1.0	

Total CONDUCERE 3.0

SECTII MEDICALE
SPITAL

SECTIA PNEUMOLOGIE I (64 PATURI)

Lege-
 Cadru
 153/2017

Nr Crt.	Denumirea functiei	Grad profesional	Studii	Grad	Post	Observatii
4	Sef sectie		S	II	1.0	
5	Medic	Primar	S		1.0	
6	Medic	Primar	S		1.0	
7	Medic	Specialist	S		1.0	Susp. Temporar
8	Medic	Specialist	S		1.0	Susp. Temporar
9	Asistent sef	Principal	PL		1.0	
10	Asistent medical	Principal	PL		1.0	
11	Asistent medical	Principal	PL		1.0	
12	Asistent medical	Principal	PL		1.0	
13	Asistent medical	Principal	PL		1.0	

14	Asistent medical	Principal	PL		1.0	
15	Asistent medical		PL		1.0	Susp. Temporar
16	Asistent medical	Principal	PL		1.0	
17	Asistent medical	Principal	PL		1.0	
18	Asistent medical	Principal	PL		1.0	
19	Asistent medical	Principal	PL		1.0	Susp. Temporar
20	Asistent medical	Principal	PL		1.0	
21	Asistent medical	Principal	PL		1.0	
22	Asistent medical	Principal	S		1.0	
23	Asistent medical	Principal	PL		1.0	
24	Asistent medical	Principal	S		1.0	
25	Infirmiera		G		1.0	
26	Infirmiera		G		1.0	
27	Infirmiera		G		1.0	
28	Infirmiera		G		1.0	
29	Infirmiera		G		1.0	
30	Infirmiera		G		1.0	
31	Infirmiera		G		1.0	
32	Ingrijitoare		G		1.0	
33	Ingrijitoare		G		1.0	
34	Ingrijitoare		G		1.0	Vacant
35	Ingrijitoare		G		1.0	Vacant

COMPARTIMENT COPII

36	Medic coordonator	Specialist	S		1.0	
37	Asistent medical coordonator	Principal	PL		1.0	
38	Asistent medical	Principal	PL		1.0	
39	Asistent medical	Principal	PL		1.0	
40	Asistent medical	Principal	PL		1.0	
41	Asistent medical	Principal	PL		1.0	
42	Asistent medical		PL		1.0	
43	Infirmiera		G		1.0	
44	Infirmiera		G		1.0	
45	Infirmiera		G		1.0	
46	Infirmiera		G		1.0	
47	Infirmiera		G		1.0	

Total SECTIA PNEUMOLOGIE I (64 PATURI)	44.0
---	-------------

SECTIA PNEUMOLOGIE II (64 PATURI)

 Lege
Cadru
 153/2017

Nr Crt.	Denumirea functiei	Grad profesional	Studii	Grad	Post	Observatii
48	Sef sectie		S	II	1.0	
49	Medic	Specialist	S		1.0	
50	Medic	Specialist	S		1.0	
51	Medic	Primar	S		1.0	
52	Medic	Primar	S		1.0	Vacant
53	Medic	Primar	S		1.0	Coordonator Sectie Covid
54	Asistent sef	Principal	PL		1.0	
55	Asistent medical	Principal	S		1.0	
56	Asistent medical	Principal	S		1.0	
57	Asistent medical	Principal	PL		1.0	
58	Asistent medical		PL		1.0	Susp. temporar
59	Asistent medical	Principal	PL		1.0	
60	Asistent medical	Principal	S		1.0	
61	Asistent medical	Principal	PL		1.0	
62	Asistent medical	Principal	PL		1.0	
63	Asistent medical	Principal	PL		1.0	Asistent coord. Sectie Covid
64	Asistent medical	Principal	PL		1.0	
65	Asistent medical	Principal	PL		1.0	
66	Asistent medical	Principal	PL		1.0	
67	Asistent medical	Principal	PL		1.0	
68	Asistent medical	Principal	PL		1.0	
69	Asistent medical	Principal	PL		1.0	
70	Asistent medical	Principal	PL		1.0	
71	Asistent medical		PL		1.0	Vacant
72	Asistent medical		PL		1.0	Vacant
73	Asistent medical		PL		1.0	Vacant
74	Infirmiera		G		1.0	
75	Infirmiera		G		1.0	
76	Infirmiera		G		1.0	
77	Infirmiera		G		1.0	
78	Infirmiera		G		1.0	
79	Infirmiera		G		1.0	
80	Infirmiera		G		1.0	
81	Infirmiera		G		1.0	
82	Infirmiera		G		1.0	
83	Infirmiera		G		1.0	
84	Ingrijitoare		G		1.0	
85	Ingrijitoare		G		1.0	
86	Ingrijitoare		G		1.0	Vacant
87	Ingrijitoare		G		1.0	Vacant

Total SECTIA PNEUMOLOGIE II (64 PATURI)
40.0

COMPARTIMENT DE DIETETICA, PREPARARE SI DISTRIBUIRE A HRANEI

Nr Crt.	Denumirea functiei	Grad profesional	Studii	Grad	Post	Observatii
88	Asistent medical coordonator	Principal	PL		1.0	
89	Infirmiera		G		1.0	
90	Infirmiera		G		1.0	
91	Infirmiera		G		1.0	
92	Infirmiera		G		1.0	Vacant
93	Infirmiera		G		1.0	Vacant
94	Infirmiera		G		1.0	
95	Muncitor calificat	II	G		1.0	Vacant
96	Muncitor calificat	I	G		1.0	
97	Muncitor calificat	IV	G		1.0	
98	Ingrijitoare		G		1.0	
99	Ingrijitoare		G		1.0	Vacant

Total COMPARTIMENT DE DIETETICA, PREPARARE SI DISTRIBUIR 12.0

CAMERA DE GARDA**Lege-Cadru**

Nr Crt.	Denumirea functiei	Grad profesional	Studii	Grad	Post	Observatii
100	Asistent medical		PL		1.0	
101	Asistent medical	Principal	PL		1.0	Vacant

Total CAMERA DE GARDA 2.0

LABORATOR RADIOLOGIE SI IMAGISTICA MEDICALA**Lege-Cadru**

Nr Crt.	Denumirea functiei	Grad profesional	Studii	Grad	Post	Observatii
102	Medic coordonator	Primar	S		1.0	
103	Asistent medical coordonator	Principal	S		1.0	
104	Asistent medical	Principal	PL		1.0	
105	Asistent medical	Principal	PL		1.0	
106	Asistent medical	Principal	PL		1.0	
107	Asistent medical	Principal	PL		0.5	
108	Asistent medical		PL		0.5	Vacant

Total LABORATOR RADIOLOGIE SI IMAGISTICA MEDICALA 6.0

FARMACIE

Nr Crt.	Denumirea functiei	Grad profesional	Studii	Lege- Cadru		Observatii
				Grad	Post	
109	Sef farmacie		S		1.0	
110	Asistent medical	Principal	PL		1.0	
111	Asistent medical	Principal	PL		1.0	

Total FARMACIE **3.0**

LABORATOR ANALIZE MEDICALE

Nr Crt.	Denumirea functiei	Grad profesional	Studii	Lege- Cadru		Observatii
				Grad	Post	
112	Sef laborator		S		1.0	Susp. temporar
113	Biolog	Specialist	S		1.0	
114	Biolog	Specialist	S		1.0	
115	Asistent medical	Principal	PL		1.0	
116	Asistent medical	Principal	PL		1.0	
117	Registrator medical		M		1.0	
118	Asistent medical	Principal	PL		1.0	
119	Registrator medical		M		1.0	
120	Ingrijitoare		G		1.0	

COMPARTIMENT BK

121	Biolog coordonator	Principal	S		1.0	
122	Asistent medical	Principal	PL		1.0	
123	Asistent medical	Principal	PL		1.0	
124	Asistent medical		PL		1.0	
125	Ingrijitoare		G		1.0	

Total LABORATOR ANALIZE MEDICALE **14.0**

COMPARTIMENT STATISTICA SI PRELUCRARI DATE

Nr Crt.	Denumirea functiei	Grad profesional	Studii	Lege- Cadru		Observatii
				Grad	Post	
126	Asistent medical coordonator	Principal	PL		1.0	
127	Asistent medical	Principal	PL		1.0	
128	Informatician	I	S		1.0	Vacant
129	Economist	IA	S		1.0	

Total COMPARTIMENT STATISTICA SI PRELUCRARI DATE **4.0**

SERVICIUL DE MANAGEMENT AL CALITATII SERVICIILOR DE SANATATE

Nr Crt.	Denumirea functiei	Grad profesional	Studii	Grad	Post	Observatii
130	Sef serviciu		S	II	1.0	
131	Referent de specialitate	IA	S		1.0	
132	Economist	IA	S		1.0	Susp. temporar

COMPARTIMENT CPIAAM

Nr Crt.	Denumirea functiei	Grad profesional	Studii	Grad	Post	Observatii
133	Medic	Specialist	S		1.0	Susp. temporar
134	Asistent medical	Debutant	PL		1.0	

Total SERVICIUL DE MANAGEMENT AL CALITATII SERVICIILOR DE	5.0
--	------------

COMPARTIMENT INTERNARI

Nr Crt.	Denumirea functiei	Grad profesional	Studii	Lege- Cadru		Observatii
				Grad	Post	
135	Registrator medical		M		1.0	
136	Registrator medical		M		1.0	
137	Registrator medical		M		1.0	

Total COMPARTIMENT INTERNARI	3.0
-------------------------------------	------------

TOTAL SPITAL	136
---------------------	------------

AMBULATORIU INTEGRAT

DISPENSAR TBC

DISPENSAR TBC BRAILA

Nr Crt.	Denumirea functiei	Grad profesional	Studii	Lege- Cadru		Observatii
				Grad	Post	
138	Asistent medical coordonator	Principal	PL		1.0	
139	Asistent medical	Principal	PL		1.0	
140	Asistent medical	Principal	PL		1.0	
141	Asistent medical	Principal	PL		1.0	
142	Asistent medical	Principal	PL		1.0	
143	Asistent medical	Principal	PL		1.0	
144	Asistent medical	Principal	PL		1.0	
145	Asistent medical	Principal	PL		1.0	
146	Asistent medical	Principal	PL		1.0	
147	Asistent medical	Principal	PL		1.0	
148	Asistent medical		PL		1.0	
149	Asistent medical	Principal	PL		1.0	
150	Asistent medical	Principal	PL		1.0	
151	Statistician medical	Principal	M		1.0	
152	Registrator medical	Principal	M		1.0	
153	Asistent medical	Principal	PL		1.0	
154	Asistent medical	Principal	PL		1.0	
155	Asistent medical	Principal	PL		1.0	
156	Asistent medical		PL		1.0	
157	Ingrijitoare		G		1.0	
158	Ingrijitoare		G		1.0	

Total DISPENSAR TBC BRAILA **21.0**

EXPLORARI FUNCTIONALE

Nr Crt.	Denumirea functiei	Grad profesional	Studii	Lege- Cadru		Observatii
				Grad	Post	
159	Asistent medical	Principal	S		1.0	
160	Asistent medical	Principal	PL		1.0	
161	Asistent medical		PL		1.0	

Total EXPLORARI FUNCTIONALE **3.0**

MEDICI REZIDENTI

Nr Crt.	Denumirea functiei	Grad profesional	Studii	Lege- Cadru		Observatii
				Grad	Post	
162	Medic rezident	Anul II	S		1.0	
163	Medic rezident	Anul I	S		1.0	Vacant
164	Medic rezident	Anul I	S		1.0	Vacant
165	Medic rezident	Anul I	S		1.0	Vacant

Total MEDICI REZIDENTI **4.0**

DISPENSAR TBC FAUREI

Nr Crt.	Denumirea functiei	Grad profesional	Studii	Lege- Cadru		Observatii
				Grad	Post	
CABINET TRATAMENTE, FISIER						
166	Medic	Specialist	S		1.0	Vacant
167	Asistent medical	Principal	PL		1.0	
168	Ingrijitoare		G		1.0	

CABINET RECOLTARE SPUTA

169	Asistent medical	Principal	PL		1.0	
170	Registrator medical	Principal	M		1.0	

CABINET ASISTENTE DE TEREN

Total DISPENSAR TBC FAUREI **5.0**

TOTAL DISPENSAR TBC **33.0**

TOTAL SECTII MEDICALE **169.0**

APARAT FUNCTIONAL**SERVICIUL FINANCIAR-CONTABILITATE**

Nr Crt.	Denumirea functiei	Grad profesional	Studii	Lege- Cadru		Observatii
				Grad	Post	
171	Sef serviciu		S	II	1.0	
172	Economist	IA	S		1.0	Susp. temporar
173	Economist	IA	S		1.0	
174	Economist	IA	S		1.0	
175	Economist	IA	S		1.0	
176	Registrator medical		M		1.0	

Total SERVICIUL FINANCIAR-CONTABILITATE **6.0**

SERVICIU ACHIZITII PUBLICE, CONTRACTARE**Lege-
Cadru**

Nr Crt.	Denumirea functiei	Grad profesional	Studii	Grad	Post	Observatii
177	Sef serviciu		S	II	1.0	
178	Economist	IA	S		1.0	
179	Operator date	II	M		1.0	
180	Muncitor calificat	IV	G		1.0	
181	Muncitor calificat	I	G		1.0	

Total SERVICIU ACHIZITII PUBLICE, CONTRACTARE 5.0**SERVICIU ADMINISTRATIV, TEHNIC, TRANSPORT****Lege-
Cadru**

Nr Crt.	Denumirea functiei	Grad profesional	Studii	Grad	Post	Observatii
182	Sef serviciu		S	II	1.0	
183	Muncitor calificat	IV	G		1.0	
184	Muncitor calificat	I	G		1.0	
185	Muncitor calificat	IV	G		1.0	Vacant
186	Muncitor calificat	I	G		1.0	
187	Muncitor calificat	IV	G		1.0	
188	Muncitor calificat	IV	G		1.0	
189	Muncitor calificat	I	G		1.0	
190	Muncitor calificat	II	G		1.0	
191	Muncitor calificat	IV	G		1.0	
192	Muncitor calificat	IV	G		1.0	Vacant
193	Spalatoreasa		G		1.0	
194	Spalatoreasa		G		1.0	
195	Spalatoreasa		G		1.0	
196	Spalatoreasa		G		1.0	
197	Ingrijitoare		G		1.0	Vacant

Total SERVICIU ADMINISTRATIV, TEHNIC, TRANSPORT 16.0

BIROU RUNOS

Nr Crt.	Denumirea functiei	Grad profesional	Studii	Lege- Cadru		Observatii
				Grad	Post	
198	Sef Birou		S	II	1.0	Vacant
199	Referent de specialitate	IA	S		1.0	Sef birou interimar
200	Psiholog	Practicant	S		1.0	
201	Referent	Debutant	M		1.0	Vacant

Total BIROU RUNOS	4.0
--------------------------	------------

COMPARTIMENT JURIDIC

Nr Crt.	Denumirea functiei	Grad profesional	Studii	Lege- Cadru		Observatii
				Grad	Post	
202	Consilier juridic	IA	S		1.0	

Total COMPARTIMENT JURIDIC	1.0
-----------------------------------	------------

TOTAL SERVICII AUXILIARE	32.0
---------------------------------	-------------

TOTAL GENERAL	201
----------------------	------------

Manager,

Ec. Sinpetru Stefan

**Comp. Runos,**

Coord. Malinche Diana